



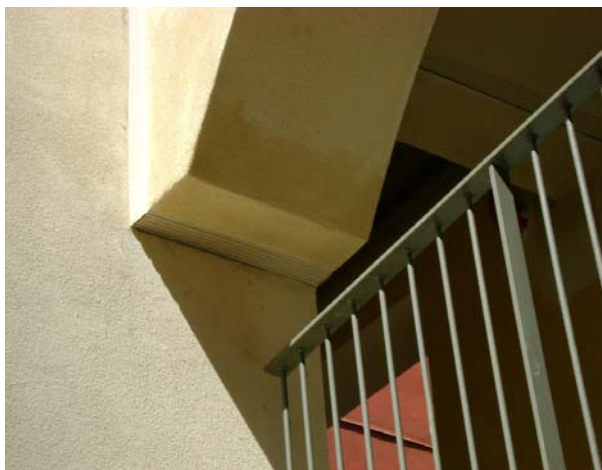
## Pick a Color, Any Color...

There are several aspects to take into consideration when selecting an expansion joint system for a specific application, including: location of the expansion joint (interior/exterior), gap opening size, expected movement, horizontal or vertical application, type of traffic (vehicular, pedestrian, other, or combination).



*New dormitories at the  
University of California, Santa Barbara*

Another consideration that can be very important, especially in exterior vertical applications, is the color of the expansion joint, and the ability to blend in with its surroundings. The building may have a lovely brick or stucco exterior, and the last thing you want is a black, rubber strip climbing the wall of your beautiful building. A simple, practical solution is the used of silicone coated expanding foam seal.



The silicone expanding foam seal offered by Erie Metal Specialties (EMS) comes in a variety of colors, and types to accommodate a wide range of applications. A recent project where this type of expansion joint system was used was at University of California at Santa Barbara. New dormitories were built to accommodate the University's growing graduate student population. The design for the dormitories required expansion joints where the pedestrian bridges joined the building structures. The exterior of the buildings is cream colored



stucco. In order to satisfy the expansion joint requirements without affecting the aesthetics of the building, the seismic (CSS-Series) expanding foam seal provided by EMS was selected. The peel-and-stick feature of this system makes it easy to install. Once properly installed, it blends in well with the surroundings, solving the dilemma of aesthetics vs. function.

If you would like to know more about the extensive selection of expansion joint systems available, call us at 716-542-3991, visit our website at [www.eriametal.com](http://www.eriametal.com), or send an e-mail to [sales@eriametal.com](mailto:sales@eriametal.com).

*Trained and approved contractor installing the  
“peel ‘n’ stick” seismic expanding foam seal*