



Volume 9, Issue 1

EMS NEWS Goes Green

We at Erie Metal Specialties, Inc. have always been partial to the color green – just look at our logo! Now, our quarterly publication *EMS NEWS* has gone green! Welcome to the inaugural edition of our *e-newsletter*. Sending the newsletter electronically will help all of us to do our part to save a tree while still providing the informative articles you have come to expect from our publication.

We hope you continue to enjoy this quarterly e-periodical. Feel free to pass it on to others who may find it interesting, and let them know that they can visit our website (www.eriemetal.com/newsletter) to sign up to receive their own electronic copy.

If you are interested in scheduling an AIA Lunch and Learn Program at your firm, please contact Suzanne Phillips (Phone: 716-542-3991, e-mail: suzanne.phillips@eriemetal.com).

Pick a Color, Any Color...

There are several aspects to take into consideration when selecting an expansion joint system for a specific application, including: location of the expansion joint (interior/exterior), gap opening size, expected movement, horizontal or vertical application, type of traffic (vehicular, pedestrian, other, or combination).



New dormitories at University of California, Santa Barbara

Another consideration that can be very important, especially in exterior vertical applications, is the color of the expansion joint, and the ability to blend in with its surroundings. The building may have a lovely brick or stucco exterior, and the last thing you want is a black, rubber strip climbing the wall of your beautiful building. A simple, practical solution is the used of silicone coated expanding foam seal.

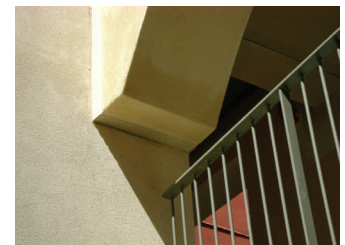
The silicone expanding foam seal offered by Erie Metal Specialties (EMS) comes in a variety of colors, and types to accommodate a wide range of applications. This type of expansion joint system was used recently used at the University of Califor-

nia at Santa Barbara. New dormitories were built to accommodate the university's growing graduate student population. The design for the dormitories required expansion joints where the pedestrian bridges joined the building structures. The exterior of the buildings are cream colored stucco. In order to satisfy the expansion joint requirements without affecting the aesthetics of the building, the seismic (CSS-Series) expanding foam seal provided by EMS was selected. The peel-and-stick feature of this system makes it easy to install. Once properly installed, it blends in well with the surroundings, solving the dilemma of aesthetics vs. function.



Trained and approved contractor installing the "peel 'n' stick" seismic expanding foam seal

Color-matched expanding foam seal blends in well with its surroundings



If you would like to know more about the extensive selection of expansion joint systems available, call us at 716-542-3991, visit our website at www.eriemetal.com, or send an e-mail to sales@eriemetal.com.



AIA Lunch and Learn Program

Erie Metal Specialties, Inc. is now offering an AIA Registered Course on Expansion Joint Systems. Upon completion of the one hour "lunch and learn" program you will have a better understanding of:

- What expansion joints are and why they are needed
- Types of commercially available expansion joint systems

(Continued on page 2)

RETURN ADDRESS REQUESTED

(Continued from page 1)

- Items to consider in expansion joint selection
- Importance of specifying expansion joint systems
- Recommended testing for expansion joint systems

You will receive one (1) learning unit (LU) or 0.1 continuing education unit (CEU). The program also qualifies for Health, Safety, and Welfare (HSW) credit.

If you are interested in scheduling an AIA Lunch and Learn Program at your firm, please contact Suzanne Phillips (Phone: 716-542-3991, e-mail: suzanne.phillips@eriemetal.com).



Existing blockouts needing extensive repair prior to installing new expansion joint

Allied was founded in 2005. The owner, Rod Hoover has over 28 years of experience in the construction/restoration field. His list of credentials include: project manager, field superintendant, concrete repair, caulking, masonry, carpentry and sealants. His vision in starting Allied was to provide a more methodical and comprehensive approach to restoration using thorough diagnostic and proven procedures to restore the structural integrity of every surface encountered.

The people at Allied include restoration/renovation specialists in masonry, concrete, stone and much more, and they have completed more than 150 projects to date. For additional information about Allied Restoration and Caulking, contact Rod Hoover at 330-458-4050 or e-mail alliedrest1@sbcglobal.net. You can also visit their website at www.alliedrestoratoincaulking.com.

Twelve inch gas powered cup grinder used to remove contaminants and give a true and level surface from side to side as required for proper joint installation



If you are interested in becoming an Approved Applicator for EMS products, contact Suzanne Phillips at 716-542-3991 or e-mail suzanne.phillips@eriemetal.com.



Contractor's Corner

Allied Restoration and Caulking

Editor's Note: EMS NEWS will periodically run the Contractor's Corner feature, highlighting one of the numerous contractors we have worked with on various projects.

Recently, we worked with Allied Restoration and Caulking (Allied) of Akron, Ohio on a restoration project at the parking garage at the Children's Hospital in Akron, Ohio. The existing winged expansion joint in the garage had failed due to cracking of the header material. This joint was removed and replaced with our CR-Series Polycrete elastomeric header system. The knowledgeable crew from Allied removed the existing joint. They also completed the required repair work on the blockouts to assure that they were sound and met the dimensional requirements for our expansion joint system. We then trained the crew in the proper method of installing our CR-series expansion joint system, including the use of the unique clamping devices that assure that the seal is properly aligned and the header material is at the correct depth. Allied has now joined the extensive list of Approved Applicators for our winged expansion joint systems.